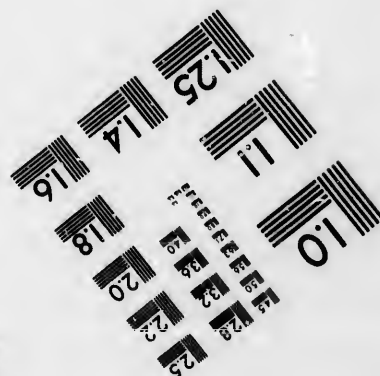
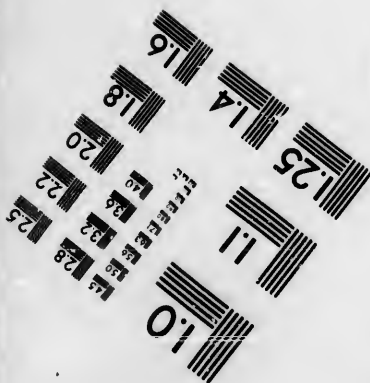
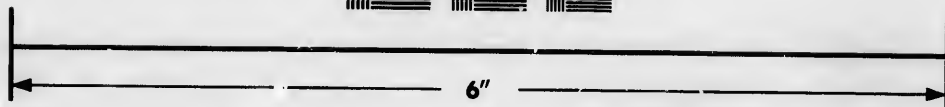
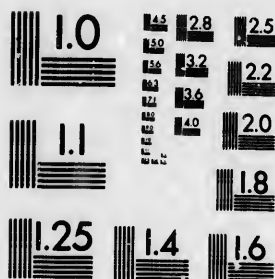


**IMAGE EVALUATION  
TEST TARGET (MT-3)**



**Photographic  
Sciences  
Corporation**

23 WEST MAIN STREET  
WEBSTER, N.Y. 14580  
(716) 872-4503

**CIHM/ICMH  
Microfiche  
Series.**

**CIHM/ICMH  
Collection de  
microfiches.**



**Canadian Institute for Historical Microreproductions / Institut canadien de microreproductions historiques**

**© 1986**

Technical and Bibliographic Notes/Notes techniques et bibliographiques

The Institute has attempted to obtain the best original copy available for filming. Features of this copy which may be bibliographically unique, which may alter any of the images in the reproduction, or which may significantly change the usual method of filming, are checked below.

L'Institut a microfilmé le meilleur exemplaire qu'il lui a été possible de se procurer. Les détails de cet exemplaire qui sont peut-être uniques du point de vue bibliographique, qui peuvent modifier une image reproduite, ou qui peuvent exiger une modification dans la méthode normale de filmage sont indiqués ci-dessous.

- Coloured covers/  
Couverture de couleur
- Covers damaged/  
Couverture endommagée
- Covers restored and/or laminated/  
Couverture restaurée et/ou pelliculée
- Cover title missing/  
Le titre de couverture manque
- Coloured maps/  
Cartes géographiques en couleur
- Coloured ink (i.e. other than blue or black)/  
Encre de couleur (i.e. autre que bleue ou noire)
- Coloured plates and/or illustrations/  
Planches et/ou illustrations en couleur
- Bound with other material/  
Relié avec d'autres documents
- Tight binding may cause shadows or distortion along interior margin/  
La reliure serrée peut causer de l'ombre ou de la distorsion le long de la marge intérieure
- Blank leaves added during restoration may appear within the text. Whenever possible, these have been omitted from filming/  
Il se peut que certaines pages blanches ajoutées lors d'une restauration apparaissent dans le texte, mais, lorsque cela était possible, ces pages n'ont pas été filmées.
- Additional comments: [Printed ephemera] 1 sheet (verso blank)  
Commentaires supplémentaires:

- Coloured pages/  
Pages de couleur
- Pages damaged/  
Pages endommagées
- Pages restored and/or laminated/  
Pages restaurées et/ou pelliculées
- Pages discoloured, stained or foxed/  
Pages décolorées, tachetées ou piquées
- Pages detached/  
Pages détachées
- Showthrough/  
Transparence
- Quality of print varies/  
Qualité inégale de l'impression
- Includes supplementary material/  
Comprend du matériel supplémentaire
- Only edition available/  
Seule édition disponible
- Pages wholly or partially obscured by errata slips, tissues, etc., have been refilmed to ensure the best possible image/  
Les pages totalement ou partiellement obscurcies par un feuillet d'errata, une pelure, etc., ont été filmées à nouveau de façon à obtenir la meilleure image possible.

This item is filmed at the reduction ratio checked below/  
Ce document est filmé au taux de réduction indiqué ci-dessous.

10X	12X	14X	16X	18X	20X	22X	24X	26X	28X	30X	32X
			/								

ails  
du  
odifier  
una  
mage

The copy filmed here has been reproduced thanks to the generosity of:

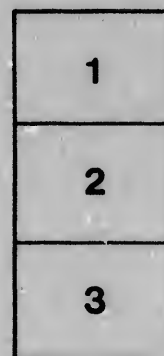
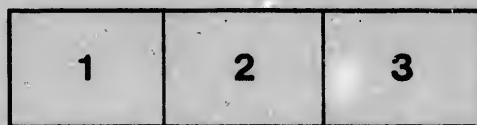
Seminary of Quebec  
Library

The images appearing here are the best quality possible considering the condition and legibility of the original copy and in keeping with the filming contract specifications.

Original copies in printed paper covers are filmed beginning with the front cover and ending on the last page with a printed or illustrated impression, or the back cover when appropriate. All other original copies are filmed beginning on the first page with a printed or illustrated impression, and ending on the last page with a printed or illustrated impression.

The last recorded frame on each microfiche shall contain the symbol  $\rightarrow$  (meaning "CONTINUED"), or the symbol  $\nabla$  (meaning "END"), whichever applies.

Maps, plates, charts, etc., may be filmed at different reduction ratios. Those too large to be entirely included in one exposure are filmed beginning in the upper left hand corner, left to right and top to bottom, as many frames as required. The following diagrams illustrate the method:



L'exemplaire filmé fut reproduit grâce à la générosité de:

Séminaire de Québec  
Bibliothèque

Les images suivantes ont été reproduites avec le plus grand soin, compte tenu de la condition et de la netteté de l'exemplaire filmé, et en conformité avec les conditions du contrat de filmage.

Les exemplaires originaux dont la couverture en papier est imprimée sont filmés en commençant par le premier plat et en terminant soit par la dernière page qui comporte une empreinte d'impression ou d'illustration, soit par le second plat, selon le cas. Tous les autres exemplaires originaux sont filmés en commençant par la première page qui comporte une empreinte d'impression ou d'illustration et en terminant par la dernière page qui comporte une telle empreinte.

Un des symboles suivants apparaîtra sur la dernière image de chaque microfiche, selon le cas: le symbole  $\rightarrow$  signifie "A SUIVRE", le symbole  $\nabla$  signifie "FIN".

Les cartes, planches, tableaux, etc., pouvant être filmés à des taux de réduction différents. Lorsque le document est trop grand pour être reproduit en un seul cliché, il est filmé à partir de l'angle supérieur gauche, de gauche à droite, et de haut en bas, en prenant le nombre d'images nécessaire. Les diagrammes suivants illustrent la méthode.

rata  
o

elure,  
à

EPISCOPAL RESIDENCE,

CHATHAM, N. B., Feb. 10, 1877.

REV. AND DEAR SIR, —

Since the first cable-gram from Europe on last Thursday night announcing the demise on that afternoon of Our Most Holy Father, Pope Pius IX., the Newspapers of each succeeding day have published further details confirming the first melancholy announcement of the Pope's death. Though we have no more authentic information than what the newspapers contain, we fear that there is too much reason to regard it as correct.

Therefore, we have announced at Mass to-day the aforesaid afflicting news in order to request the prayers of the Faithful for the repose of the Soul of our late Venerated Sovereign Pontiff; also that as next Friday, the 15th of February, inst., the ninth day after the Pope's decease, will, according to usage, be the day of his sepulture and final obsequies in St. Peter's Church at Rome, a Solemn High Mass of Requiem preceded by the Office of the Dead will be chanted for His late Holiness in our Pro-Cathedral at Chatham, on that morning by the Bishop and Clergy of the Diocese, at which you are hereby respectfully invited to attend.

Also, be pleased to request the prayers of your flock for our deceased beloved Holy Father, as well as their prayers that God may graciously guide and direct all those whose office it is to elect a Successor in the Chair of Peter, that the new Sovereign Pontiff to be elected be a man after God's own heart, worthy of his great predecessor in the Papal Chair, and endued with the light and strength of the Holy Ghost, to govern the universal flock of Christ in wisdom, peace, and every spiritual comfort.

For this end we ordain that instead of the Collect *Pio Papa* hitherto ordered, the Collects of the Mass, *Pro eligendo Summo Pontifici* be added at each Mass when the Rubrics permit, by the Reverend Clergy of our Diocese, until the new Pope's Election be authentically known.

Begging the "Giver of all good gifts" to bless, comfort and protect you and all of us in this hour of general affliction!

I remain,

Rev. and Dear Sir,

Your humble and faithful Servant in Jesus Christ.

† JAMES ROGERS,

BISHOP OF CHATHAM.

By Order of His Lordship the Bishop,

MICHAEL JOYCE, Sec'y.

